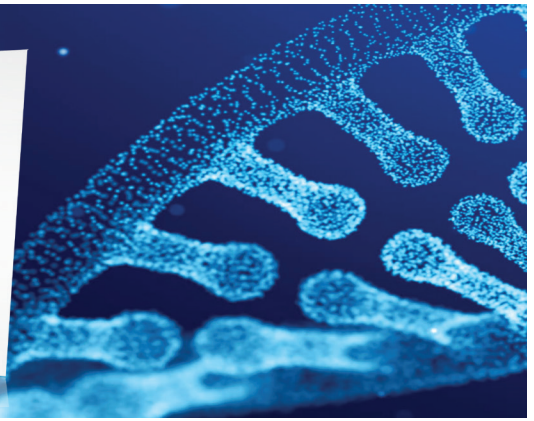


# Commission Hot Sheet



## 1. PRODUCT INTRODUCTION BONUS



### BRONZE PACK

Cost \$124.95  
Quantity 1 sleeve  
Unit Price \$124.95  
Volume Points 77

**PIB \$15**



### SILVER PACK

Cost \$299.95  
Quantity - 3 Sleeves  
Unit Price - \$99  
Volume Points - 165

**PIB \$50**



### GOLD PACK

Cost \$499.95  
Quantity - 5 Sleeves  
Unit Price - \$99  
Volume Points - 275

**PIB \$100**



### PLATINUM PACK

Cost \$999.95  
Quantity 12 sleeve  
Unit Price \$84  
Volume Points 350

**PIB \$150**

**WHEN YOU BUY A  
DIAMOND PACK  
YOU EARN PIB  
PLATINUM \$300  
DIAMOND \$500**



### DIAMOND PACK

Cost \$1,599.95  
Quantity - 19 Sleeves  
Unit Price - \$84  
Volume Points - 610  
(390-1st month, 110-2nd month, 110-3rd month)

**PIB \$200**

## WHY A DIAMOND PACK IS A GOOD BUSINESS INVESTMENT

- 3 Month Active AutoShip Included with Diamond Pack
- Your Price Goes Down to \$84 a Sleeve
- Sell 3 Diamond Packs and Your Pack of 19 sleeves is FREE
- Paid at Senior Director Level for 14 Weeks (When you buy a Diamond Pack or date you upgrade to a Diamond Pack)

## 2. BINARY COMMISSION BONUS

Active = Pack +55 Points/1 Sleeve per month Auto Ship  
 Qualified = Enroll 1 Person on Left and Enroll 1 Person on Right



## 3. COMMISSION MATCHING BONUS

SPONSORSHIP LEVEL	BONUS
<b>Level 1 Distributors You Enroll</b> - Active on 110 Points, Silver Pack Qualified, 2 Active Silvers on your Right, 2 Active Silvers on your Left, Gold Pack Qualified, 1 Silver on your Right, 1 Silver on your Left and 2 Binary Cycling.	<b>25%</b>
<b>Level 2 Distributors You Enrolled by your 1st Generation</b> - Active on 110 Points, Silver pack or more qualified, 2 Active Silvers on your Right, 2 Active Silvers on your Left and 6 Binary Cycling.	<b>20%</b>
<b>Level 3 Distributors You Enrolled by your 2nd Generation</b> - Active on 110 Points, Silver Pack or more Qualified, 3 Active Silvers on your Right, 3 Active Silvers on your Left, 1 Distributor in Each Leg Qualified for Level 2 Matching Bonus and 10 Binary Cycling.	<b>20%</b>

### DISTRIBUTOR RANK QUALIFICATIONS:

#### MANAGER

- Be a Gold Rank Distributor or above
- Generate a minimum of 110 PV per month
- Have two personally sponsored Active Silver Members or more on each leg
- Earn \$200 Platinum Pack
- Earn \$300 Diamond Pack

#### DIRECTOR

- Be a Gold Rank Distributor or above
- Generate a minimum of 110 PV per month
- Have three personally sponsored Silver Members or more on each leg
- Have one personally sponsored Distributor who achieves Manager Status on each leg
- Earn \$250 Platinum Pack
- Earn \$400 Diamond Pack

#### SENIOR DIRECTOR

- Achieve all qualifications for Director Status listed above
- Have two personally sponsored Distributors who achieve Director Status
- Earn 10,000 BV through line of sponsorship in 30 day period
- Earn \$300 Platinum Pack
- Earn \$500 Diamond Pack

#### EXECUTIVE DIRECTOR

- Achieve all qualifications for Director Status listed above
- Have two personally sponsored Distributors who achieve Director Status
- Earn 50,000 BV through line of sponsorship in 30 day period
- Earn \$300 Platinum Pack
- Earn \$500 Diamond Pack

#### PRESIDENTIAL DIRECTOR

- Achieve all qualifications for Director Status listed above
- Have two personally sponsored Distributors who achieve Director Status
- Earn 100,000 BV through line of sponsorship in 30 day period
- Earn \$300 Platinum Pack
- Earn \$500 Diamond Pack

#### SENIOR PRESIDENTIAL DIRECTOR

- Achieve all qualifications for Director Status above
- Have two personally sponsored Distributors who achieve Director Status
- Earn 200,000 BV through line of sponsorship in 30 day period
- Earn \$300 Platinum Pack
- Earn \$500 Diamond Pack

YOUR CONTACT LABEL HERE